



AutoPilot[®] On-Demand for WebSphere MQ

Enabling DevOps with Self-Service Access to Middleware

Reproducing Production Problems is Challenging

Complex, composite applications have a critical dependency on message queuing systems to interconnect with other applications both within the datacenter and across corporate boundaries to the applications of trading partners.

However, the Development organization rarely has online access to middleware diagnostics. This makes the task of reproducing production problems where middleware is being used very difficult. In addition since the tools these teams are using for diagnostics are different than Operation's monitoring tools, it becomes difficult for the two groups to speak the same language about these problems.

As enterprises conclude that their application environments have become far

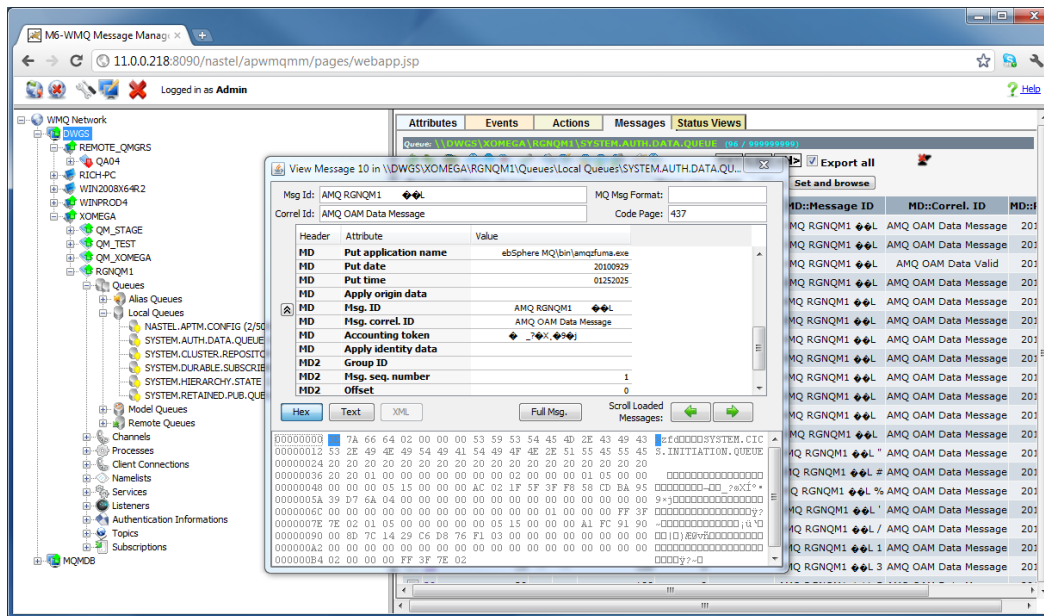
too complex to deploy and manage with silo teams and stand-alone tools, they begin evolving towards a DevOps culture. The resultant cross-functional group needs the right tools to act as a bridge supplying a "common language" across these teams. AutoPilot On-Demand for WebSphere MQ (WMQ) can enable development with visibility and diagnostics for middleware and be that bridge.

AutoPilot On-Demand for WMQ

AutoPilot On-Demand for WMQ is a web-based, highly secure, multi-user solution for accessing IBM WMQ resources and is delivered in a virtual appliance with zero installation.

Capabilities include:

- Secure, audited access controlled by personnel with administrative rights
- Views of WMQ resources such as queues, channels, queue managers, and subscriptions



Message Browsing





- Ability to view and manipulate messages generated by applications
- Views of queue status and applications
- Resource utilization displays, such as queue depth, channel usage
- Ability to act on application specific messages (move, copy, edit, route, replay, create).

Self-Service:

AutoPilot On-Demand enables safe, secure and controlled delegation of views, to the various users requiring real-time visibility of their applications in an IBM WMQ environment. AutoPilot On-Demand delivers self-service access to the application development team and operations; thus, greatly reducing the load on middleware administrators.

With AutoPilot On-Demand, multiple teams can now have on-demand access to critical information about their applications without having to involve the shared services center. The self-service model this solution offers reduces the load on the middleware team at the same time providing the necessary real-time data that other groups require in order to improve availability and performance of their business applications.

Benefits:

- *Simplicity*: Easy to deploy and use as it delivered as a virtual appliance image based on VMware and accessed using a web browser. Download-Unzip-Play.
- *Secure multi-user access*
- *Secure message management*
- *DevOps enablement*

About Nastel

Nastel Technologies is a premier global provider of business transaction performance™ solutions for mission-critical applications from the datacenter to the cloud.

Nastel is a privately held company headquartered in New York, with offices in the U.S., the U.K., Germany and Mexico, and a network of partners throughout Europe, the Middle East, Latin America and Asia. For more information, visit Nastel's website at www.nastel.com.

Support for a Wide Range of Platforms

Including:

- ❑ AIX 6, Solaris 8-10, HP-UX 11i
- ❑ IBM System P, AS/400
- ❑ HP OpenVMS, Tandem
- ❑ Windows 7, 2k, 2003, Vista, 2008
- ❑ RH Linux 4,5; SuSe Linux 10
- ❑ z/OS 1.8, 1.9, 1.10 and zLinux
- ❑ ESM integration: HP, IBM, CA, BMC

AutoPilot modules include:

- ❑ **Messaging** - IBM DataPower, IBM WMQ, Solace Systems Messaging Appliance, TIBCO EMS/RV, IBM WBI, IBM WMQ Smart Plug-in for HP Operations Center software
- ❑ **Transaction Management** - IBM CICS, IBM WMQ, WESB, WAS; WebLogic; JBoss, Oracle AS, Sun GlassFish, Java, JMS, JDBC. .NET
- ❑ **J2EE** - IBM WAS, BEA WebLogic, JBoss, Oracle AS, Sun GlassFish
- ❑ **ESB** - IBM WESB
- ❑ **DB** - DB2, Oracle, MS SQL Server
- ❑ **.NET**



Europe
Surrey Technology Centre
Surrey Research Park
Guildford, Surrey
GU2 7YG, UK
+44 (0)2070 846 205

Germany
(Deutschland,
Österreich, Schweiz)
Amperwehrstrasse 54
D-85368 Moosburg a.d.
Isar
+49 (0) 8761 722158

www.nastel.com

United States HQ
48 South Service Rd.
Suite 205
Melville, NY 11747
+1 631.761.9100
+1800.580.2344

Latin America
Bosques de Ciruelos
No. 180 Piso 9 Ofna. 3
Bosques de las Lomas
C.P. 11700 Mexico, D.F.
+011 52 55 55 964 296

Asia Pacific
1 Fullerton Road
One Fullerton #02-01
Singapore 049213 .
+65 6832 5090

HP Software
Gold Business Partner

