

AutoPilot[®] For WebSphere DataPower

A Unified Platform for Managing Multiple Middleware Technologies in a Consistent Manner

Monitoring Multiple Middleware Solutions is Challenging

Whether through acquisition or plan, many firms find themselves running multiple middleware solutions each with their own set of management tools. Often, this is unavoidable as middleware is frequently linked tightly with specific applications.

Adding to the complexity, middleware solutions are regularly bridged by IBM WebSphere DataPower appliances which transform and route message content between applications and other middleware platforms.

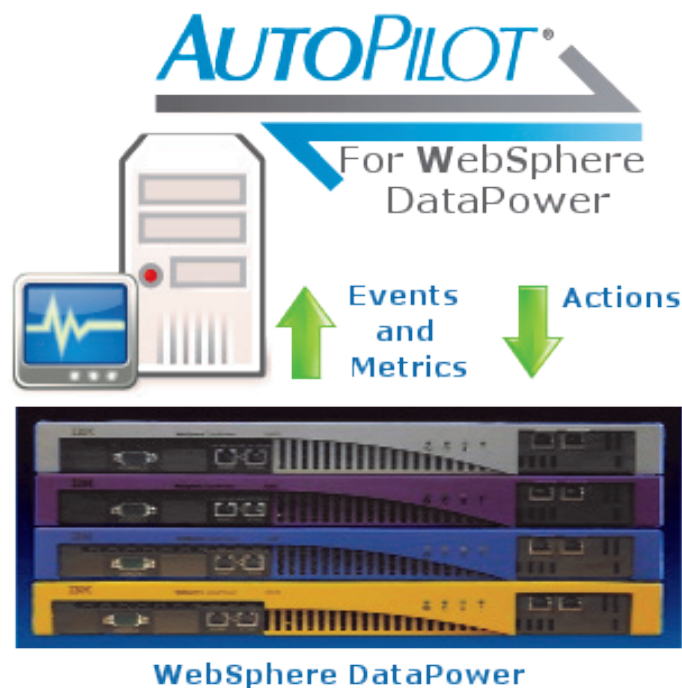
The challenge that businesses who leverage middleware as the nervous system of their application infrastructure all face is the need to consolidate their tools and provide a single monitoring solution across all middleware.

The Only Solution

Nastel AutoPilot is only solution to support all software and appliance based middleware technology requirements: WebSphere MQ, TIBCO EMS and RV, Solace, WebSphere DataPower and home-grown.

Nastel AutoPilot provides:

- A unified way to support permissions, user access and re-certification
- A facility to create powerful rules monitor the environment without the need for support staff to constantly monitor screens/dashboards
- A unified approach to enterprise monitoring that is end-to-end





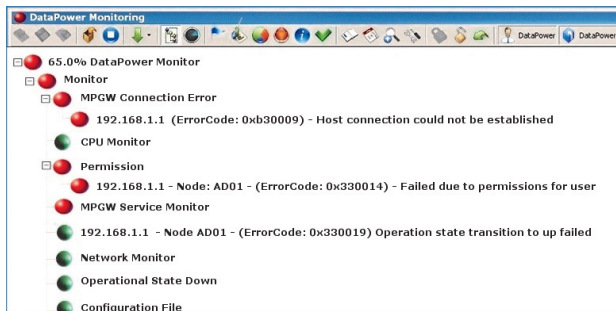
AutoPilot for WebSphere DataPower

AutoPilot for WebSphere DataPower monitors:

- DataPower's consumption of system resources over time
- DataPower metrics
- DataPower's performance of key business activities
- Routing and transformation history
- Correlate DataPower performance data with events from other systems

Benefits

- A single point of control over infrastructure, both off-the-shelf and home-grown
- Early-warning alerts for DataPower performance in accordance with policy
- Measurement of how DataPower performance impacts movement through the execution of a business process



AutoPilot monitors IBM DataPower appliances via Web Services and SNMP. In the situation above it has detected a configuration error. AutoPilot can create robust alerts which monitor multiple factors within DataPower before triggering alerts and warnings and offers a single monitoring interface across all of a customers middleware.

About Nastel

Nastel Technologies is a premier global provider of application performance monitoring solutions for mission-critical applications from the datacenter to the cloud.

Nastel is a privately held company headquartered in New York, with offices in the U.S., the U.K., Germany and Mexico, and a network of partners throughout Europe, the Middle East, Latin America and Asia. For more information, visit Nastel's website at www.nastel.com.

Support for a Wide Range of Platforms

Including:

- ❑ AIX 6, Solaris 8-10, HP-UX 11i
- ❑ IBM System P, System i (AS/400)
- ❑ HP OpenVMS, Tandem
- ❑ Windows 7, 2k, 2003, Vista, 2008
- ❑ RH Linux 4,5; SuSe Linux 10
- ❑ z/OS 1.9, 1.10, 1.11 and zLinux

AutoPilot modules include:

- ❑ **Messaging** - IBM WebSphere DataPower, IBM WMQ, Solace Systems Messaging Appliance, TIBCO EMS/RV, IBM WBI, IBM WMQ Smart Plug-in for HP Operations Center software
- ❑ **Transaction Management** - IBM CICS, IBM WMQ, WESB, WAS; WebLogic; JBoss, Oracle AS, Sun GlassFish, Java, JMS, JDBC. .NET
- ❑ **J2EE** - IBM WAS, BEA WebLogic, JBoss, Oracle AS, Sun GlassFish
- ❑ **ESB** - IBM WESB
- ❑ **DB** - DB2, Oracle, MS SQL Server, Sybase
- ❑ **.NET**



Europe
Surrey Technology Centre
Surrey Research Park
Guildford, Surrey
GU2 7YG, UK
+44 (0)2070 846 205

Germany
(Deutschland, Österreich,
Schweiz)
Landshuter Allee 8-10
D-80637 München
+49 (0) 89 54 55 81 11

www.nastel.com

United States HQ
48 South Service Rd.
Suite 205
Melville, NY 11747
+1 631.761.9100
+1800.580.2344

Latin America
Bosques de Ciruelos
No. 180 Piso 9 Ofna. 3
Bosques de las Lomas
C.P. 11700 Mexico, D.F.
+52 55 55 962 861

Asia Pacific
1 Fullerton Road
One Fullerton #02-01
Singapore 049213 .
+65 6832 5090

HP Software
Gold Business Partner

