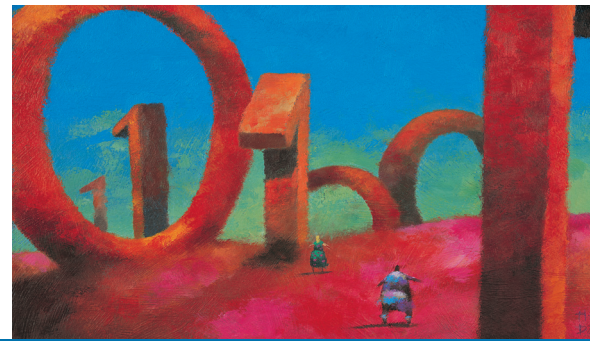




Be Assured.

Application Performance Monitoring From *A* to *Z*



AutoPilot/WBI WebSphere Business Integrator Monitoring

AUTOPILOT/WBI

IBM's WebSphere Business Integration suite enables the tight integration of data, applications, processes and people across and beyond your company.

Nastel's AutoPilot for WebSphere Business Integration Plug-in (AutoPilot/WBI) helps you realize the true benefits of this comprehensive end-to-end integration.

AutoPilot/WBI is the most comprehensive solution for monitoring and managing your WebSphere Business Integration environment. AutoPilot/WBI affords you total control over the technologies at the heart of your critical business operations.

MOST ADVANCED MONITORING AND MANAGEMENT CAPABILITIES

AutoPilot/WBI incorporates some of the most advanced management and monitoring technologies such as a next generation metrics-collaboration scheme, on-demand event generation, user-definable events and action triggers, automatic data correlation, and compound alerting.

AutoPilot/WBI lets you see exactly what is going on end-to-end in real time -- from your newest web-based applications to your main-frame-based legacy systems.

AutoPilot/WBI provides you with standardized operational commands and control of your entire distributed WebSphere Business

Integration network from one single, Web-based console for all WBI services and components, including WebSphere MQ.

More than that, AutoPilot/WBI is the only suite of tools that not only lets your IT staff see what's happening at the most granular levels, but also enables business users to detect, interpret, and make sense of the myriad of interactions and inter-dependencies and the complex events that keep your business processes flowing.

AutoPilot/WBI lets you see exactly what is going on end-to-end in real time -- from your newest web-based applications to your main-frame-based legacy systems.

AutoPilot/WBI gives you the power to make better, more timely decisions and take corrective actions before your business is impacted.

THE AUTOPILOT/WBI ADVANTAGE

High availability — Dramatically improves your service levels, customer experience and retention by maximizing the efficiency, availability and reliability of your WebSphere Business Integration applications

AutoPilot/WBI is the most comprehensive solution for monitoring and managing your WebSphere Business Integration environment.

Complete, secure control — Gives you total end-to-end control across all platforms throughout your entire WebSphere Business Integration application environment

Empowerment across the enterprise — Gives all groups affected by WebSphere MQ failures, including data center staff, support, application developers and business unit personnel the ability to take proactive corrective actions based on actionable alerts customized with the precise data they need about the impact of specific IT failures

Increased IT productivity — Frees technical resources to focus on reducing application backlog, tightening security and addressing other pressing IT issues

Significantly reduced cost — Automates labor-intensive monitoring and management tasks and automatically corrects common failures and problems, allowing you to accomplish more with existing resources

Seamless implementation — Plugs into popular ESM systems like HP-OV, Tivoli, Unicenter, and BMC Patrol to remove the need for expensive, time-consuming customization

Speed — Accelerates the deployment of middleware technologies and WebSphere Business Integration applications

Minimal downtime — Virtually eliminates the process bottlenecks, performance degradation and downtime that can cost companies millions

About Nastel

Nastel is a recognized market leader in providing solutions for application transaction monitoring and management. Every day, billions of transactions flow through our clients' infrastructures that are managed and monitored by AutoPilot, including some of the world's largest banks, financial institutions, retail chains and insurance providers. Nastel, founded in 1994, is headquartered in New York, has offices in the U.S. and Europe and a growing network of resellers and partners around the world. For more information please visit www.nastel.com.

Nastel Technologies
48 South Service Road
Melville, N.Y. 11747
(p) (631) 761-9100
(f) (631) 761-9101
www.nastel.com

