

# AutoPilot® For TIBCO EMS

*A Unified Platform for Managing Multiple Middleware Technologies in a Consistent Manner*

## Monitoring Multiple Middleware Solutions is Challenging

Whether through acquisition or plan, many firms find themselves running multiple middleware solutions each with their own set of management tools. Often, this is unavoidable as middleware is frequently linked tightly with specific applications.

A key part of many middleware solutions is TIBCO Enterprise Message Service (EMS), a messaging platform that brings together different IT assets and communications technologies on a common enterprise backbone to manage the real-time flow of information.

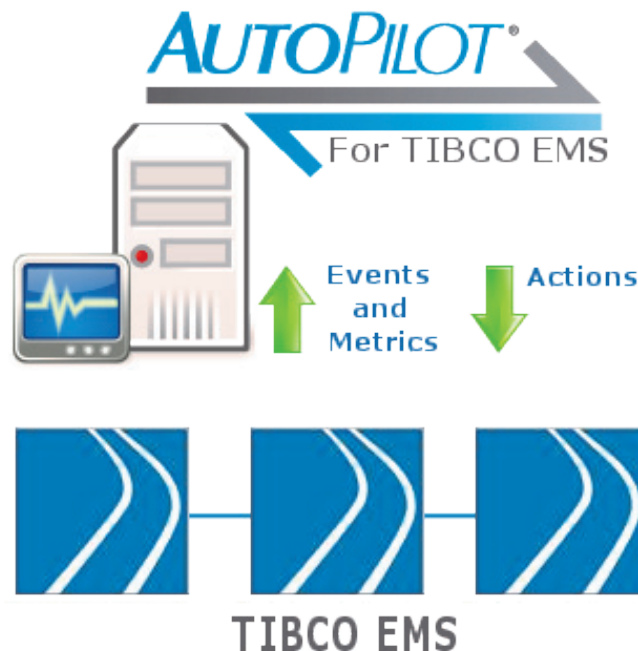
The challenge that businesses who leverage middleware, including TIBCO EMS as the nervous system of their application infrastructure all face is the need to consolidate their tools and provide a single monitoring solution across all middleware.

## The Only Solution

Nastel AutoPilot is only solution to support all software and appliance based middleware technology requirements: TIBCO EMS and RV, WebSphere MQ, Solace, WebSphere DataPower and home-grown.

Nastel AutoPilot provides:

- A unified way to support permissions, user access and re-certification
- A facility to create powerful rules to monitor the environment without the need for support staff to constantly monitor screens/dashboards
- A unified approach to enterprise monitoring that is end-to-end



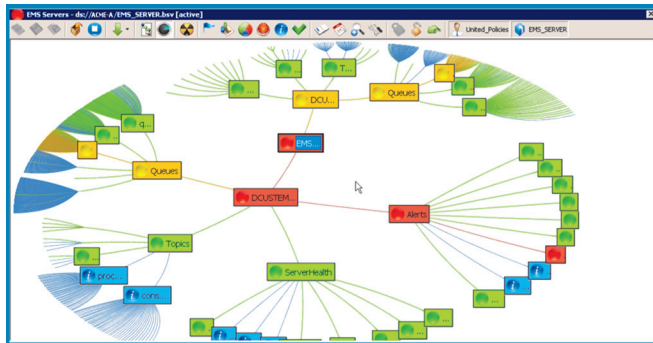


### AutoPilot for TIBCO EMS

- AutoPilot collects information from the EMS Server administering object, TibjmsAdmin using agents or agent-free
- Metrics are collected for: servers, queues, routes, groups, consumers, producers, transports, durables and events and inbound, outbound, acknowledged and pending message volumes, message rates per second, average response times, message tracking and age of oldest messages.
- Monitors system events capturing details about, e.g. “a user making a connection” or an “admin setting a user’s password” and many others
- Monitors groups of EMS servers

### Benefits

- A single point of control over middleware, both off-the-shelf and home-grown
- Early-warning alerts for TIBCO EMS performance in accordance with policy



The ‘map’ view above gives a high level KPI view of the general state of a given system. These types of views allow the viewer to consume large amounts of system data from a single pane of glass. The view can be adjusted to bring focus to the relevant component or sub-system. Notice that this screen capture shows Queues, Topics, Server Health, EMS and Alerts all at the same time.

### About Nastel

Nastel Technologies is a premier global provider of application performance monitoring solutions for mission-critical applications from the datacenter to the cloud.

Nastel is a privately held company headquartered in New York, with offices in the U.S., the U.K., Germany and Mexico, and a network of partners throughout Europe, the Middle East, Latin America and Asia. For more information, visit Nastel’s website at [www.nastel.com](http://www.nastel.com).

### Support for a Wide Range of Platforms

Including:

- ❑ AIX 6, Solaris 8-10, HP-UX 11i
- ❑ IBM System P, System i (AS/400)
- ❑ HP OpenVMS, Tandem
- ❑ Windows 7, 2k, 2003, Vista, 2008
- ❑ RH Linux 4,5; SuSe Linux 10
- ❑ z/OS 1.9, 1.10, 1.11 and zLinux

### AutoPilot modules include:

- ❑ **Messaging** - IBM WebSphere DataPower, IBM WMQ, Solace Systems Messaging Appliance, TIBCO EMS/RV, IBM WBI, IBM WMQ Smart Plug-in for HP Operations Center software
- ❑ **Transaction Management** - IBM CICS, IBM WMQ, WESB, WAS; WebLogic; JBoss, Oracle AS, Sun GlassFish, Java, JMS, JDBC. .NET
- ❑ **J2EE** - IBM WAS, BEA WebLogic, JBoss, Oracle AS, Sun GlassFish
- ❑ **ESB** - IBM WESB
- ❑ **DB** - DB2, Oracle, MS SQL Server, Sybase
- ❑ **.NET**



**Europe**  
Surrey Technology Centre  
Surrey Research Park  
Guildford, Surrey  
GU2 7YG, UK  
+44 (0)2070 846 205

**Germany**  
(Deutschland, Österreich,  
Schweiz)  
Landshuter Allee 8-10  
D-80637 München  
+49 (0) 89 54 55 81 11

### www.nastel.com

**United States HQ**  
48 South Service Rd.  
Suite 205  
Melville, NY 11747  
+1 631.761.9100  
+1800.580.2344

**Latin America**  
Bosques de Ciruelos  
No. 180 Piso 9 Ofna. 3  
Bosques de las Lomas  
C.P. 11700 Mexico, D.F.  
+52 55 55 962 861

**Asia Pacific**  
1 Fullerton Road  
One Fullerton #02-01  
Singapore 049213 .  
+65 6832 5090

HP Software  
Gold Business Partner

