



# Nastel Job Scheduler Expert

August 2021

## Contents

About.....	2
Prerequisites .....	2
Installation steps .....	3

**DOCUMENT NUMBER: SCHED1.03**

**CONFIDENTIALITY STATEMENT:** THE INFORMATION WITHIN THIS MEDIA IS PROPRIETARY IN NATURE AND IS THE SOLE PROPERTY OF NASTEL TECHNOLOGIES, INC. ALL PRODUCTS AND INFORMATION DEVELOPED BY NASTEL ARE INTENDED FOR LIMITED DISTRIBUTION TO AUTHORIZED NASTEL EMPLOYEES, LICENSED CLIENTS, AND AUTHORIZED USERS. THIS INFORMATION (INCLUDING SOFTWARE, ELECTRONIC AND PRINTED MEDIA) IS NOT TO BE COPIED OR DISTRIBUTED IN ANY FORM WITHOUT THE EXPRESSED WRITTEN PERMISSION FROM NASTEL TECHNOLOGIES, INC.

## About

The Nastel Job Scheduler Expert is a shared Nastel AutoPilot Service that is used in the background by Nastel Navigator and XRay to schedule changes to the environment.

The expert is used in the background of Nastel XRay for scheduling. With Nastel Navigator, users can schedule tasks for a future time (see [What is scheduling and how is it used?](#) for more information on how to use the expert with Nastel Navigator).

Below are the requirements and installation steps to utilize the Nastel Job Scheduler Expert.

## Prerequisites

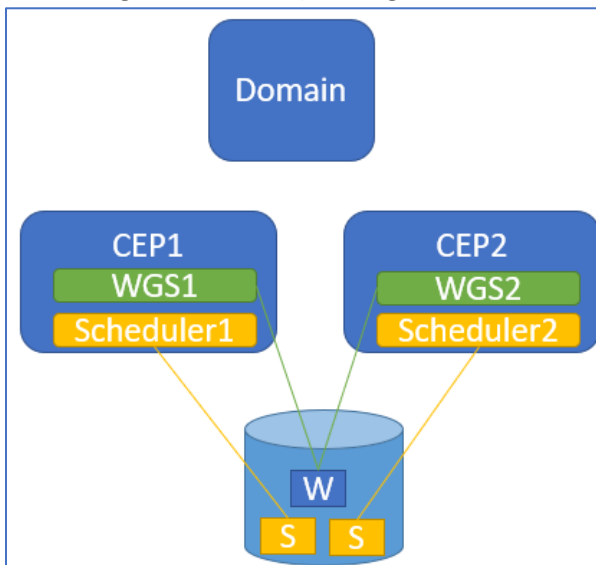
The following product versions are required:

	Nastel Job Scheduler Expert	Nastel AutoPilot Service Update	Java
Nastel Navigator WGS	10.1.5.18+	AP60_SU31.pkg+	1.8+
Nastel XRay	0.1.3+	AP60_SU31.pkg+	1.8+

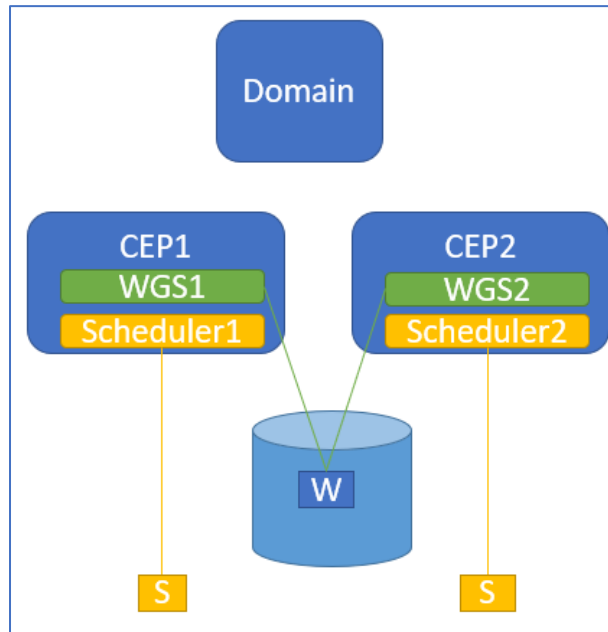
Confirm that you are using a supported database. The Job Scheduler Expert supports MySQL, PostgreSQL, Oracle, MS SQL, and DB2.

Confirm that one of the following Job Scheduler Expert configurations are in place:

- **Option 1:** Utilize multiple schedulers with a common corporate database. These scheduler database tables cannot be shared, but allow for a unique prefix for each of the scheduler tables (see configuration below). A single schema could support multiple scheduler instances.



- **Option 2:** Using a local dedicated database for scheduler. This scheduler database requires minimal maintenance which makes it a good candidate for a local instance. The WGS DB could be shared or separate in this model. In this case, default prefix is sufficient for scheduler tables.



## Installation steps

1. Install the package, **JOB\_SCHEDULER-0.1xx.pkg**. The scheduler is packaged separate from the WGS and XRay experts and is available from the same media or web site from where you obtained these.
2. Locate and run the SQL files that will create the scheduler tables for your specific database. The SQL files are in the following location:

```

AutoPilotM6/scheduler/config/db/
AutoPilotM6/scheduler/config/db/upgrades (if upgrading from earlier version)

```

The SQL file names are as follows. Run them from the command client or database Admin tool.

```

ap-sched-<db>.sql
upgrade-0.x.xx-sched-<db>.sql

```

3. Create the quartz tables by running the following SQL file:

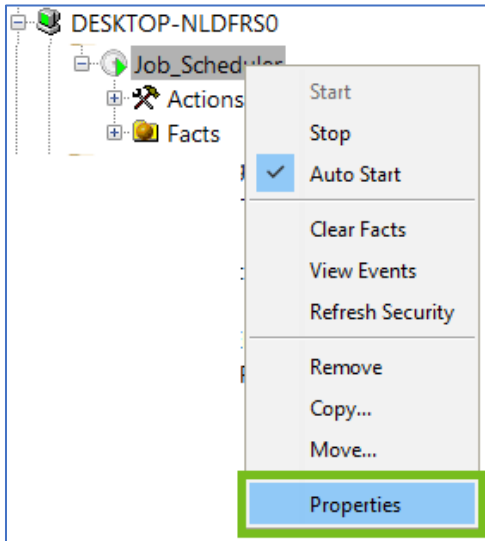
```

AutoPilotM6/scheduler/config/db/quartz_<db>.sql

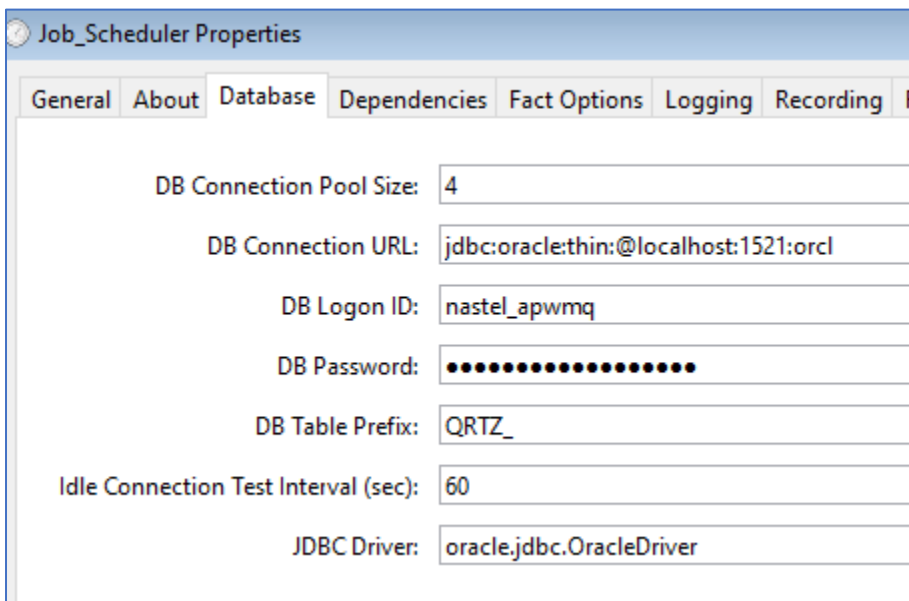
```

- a. If you plan to use a prefixed version (option 1 above), change QRTZ\_ to your prefix. For simplicity, we recommend the WGS name as the prefix. For example, QRTZ\_FIRED\_TRIGGERS would become WGS\_PROD\_FIRED\_TRIGGERS.

4. Open the *Job\_Scheduler Properties* screen by right clicking on **Job\_Scheduler** and select **Properties** from the menu.

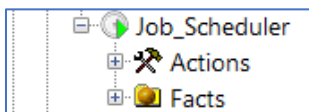


5. Configure the **Database** tab to the database where you ran the scripts and click **Deploy** if this is a new installation or **Apply** if you are editing an existing installation.



In the **DB Table Prefix** field specify the prefix used when creating the tables in step 3. This can be an environment variable such as {WGS}.

6. Restart the CEP server.



7. Verify that the scheduler service starts.
8. The Job Scheduler Expert is now ready to be utilized.