



Nastel AutoPilot for Solace

Collect information from the Solace appliance

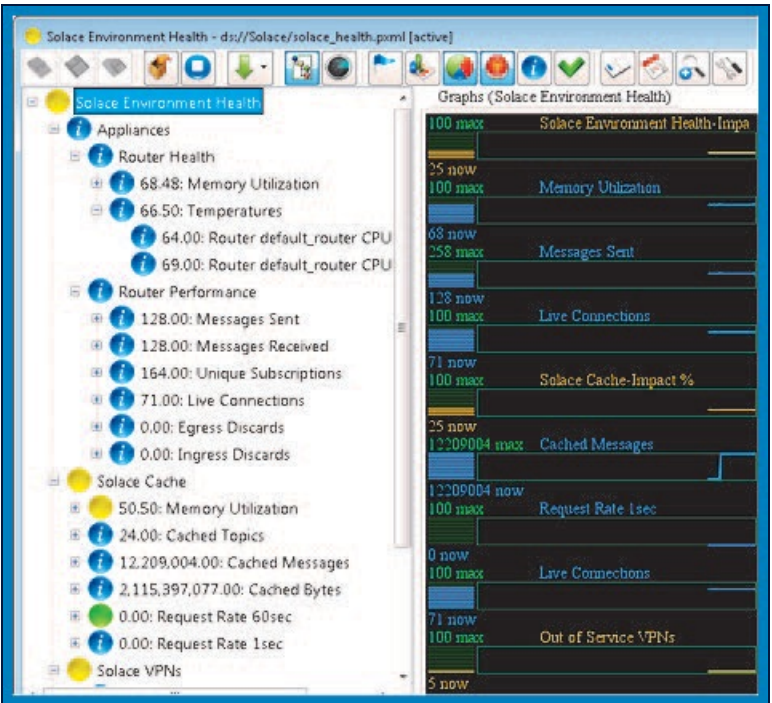
About Nastel AutoPilot for Solace

A key part of many middleware solutions is the Solace Messaging Appliance, a hardware and software-based approach to middleware messaging. Nastel AutoPilot for Solace collects information from the appliance using Solace Element Management Protocol (SEMP) and can monitor multiple appliances. Nastel AutoPilot for Solace combines monitoring of software components of the Solace environment with the hardware inventory and assets (blades, power modules, fans) to provide a complete Solace monitoring solution.

Features and Benefits:

Feature	Benefit	Description
Monitor Solace	Deliver leading-edge levels of monitoring to Solace	Metrics include: appliance specifications, appliance incoming/ outgoing data statistics, Cache and cache-level statistics, Router clients, Hardware properties and specifications, Router queues, List of VPNs and VPN- level statistics and Current/max messages spooled

Nastel AutoPilot is the only solution to support all software and appliance based middleware technology requirements: Solace, TIBCO EMS and RV, IBM MQ, IBM DataPower and home-grown solutions.



The view above shows Solace appliance health and configurable graphs of appliance performance over time.

The challenge that businesses who leverage middleware, including Solace as the nervous system of their application infrastructure all face is the need to consolidate their tools and provide a single monitoring solution across all middleware.

Platform Description:

Supported Platforms:

Solace Systems Messaging Appliance



Disclaimer:

Information contained in this data sheet is up-to-date and correct as at the date of issue. All product, product specifications and data are subject to change without notice to improve reliability and function of our software. To the maximum extent permitted by law, Nastel Technologies, Inc. will not be responsible for damages of any nature resulting from the use or reliance upon the information contained in this data sheet. No express or implied warranties are given other than those implies mandatory by law.