



# Nastel AutoPilot Software Plug In (SPI) for WebSphere MQ for HP Software

Monitor and manage IBM WebSphere MQ (MQ Series) environments from the convenience of your Operations Center management platform

## About Nastel AutoPilot Software Plug In (SPI) for WebSphere MQ for HP Software

Manage WebSphere MQ From Your Operations Center Console With Nastel's Certified Smart Plug-in for HP Operations Center

Fully integrated with Operations Center, the AutoPilot/ WMQ SPI functions as a natural extension to your Operations Center environment. It gives you the advantage of a single point of control over your entire enterprise IT infrastructure from within your Operations Center console.

Through AutoPilot/WMQ SPI, you get complete access to all WebSphere MQ nodes including those not supported by the Operations agent, such as OS/390, z/ OS, MVS and OS/400.

## Features and Benefits:

Feature	Benefit	Description
Discovery	Increased visibility	Automatically discovers your entire WMQ environment
Single Console	Increase Control	Issues commands to all WMQ nodes from a single console
Monitoring	Improved Management	Lets you monitor the health of your WMQ queues and channels end-to-end from your Operations Center console
Configuration management	Reduce complexity of management	Configures and controls WMQ objects such as queue managers, channels, messages and processes and generates configuration reports
Automatic Detection	Rapid Response	Automatically detects and flags problems within WMQ in real-time and displays on your Operations Center console

Feature	Benefit	Description
Root Cause Analysis	Reduce the complexity of problem identification and resolution	Drills down with laser precision to the root cause and resolves from your Operations Center console
Event management	Process automation	Creates events automatically based on conditions and thresholds or through operator-initiated actions, with email or pager notification
Policy and templates	Rapidly generates environment-specific policy and templates	Rapidly generates environment-specific policy and templates
Queue depth warnings	Simplifies management	Automatically issues queue depth warnings for dead letter and other local queues
Log management	Simplifies log management	Displays WMQ logs on demand and lets you monitor and trim the size of log files that exceed the threshold

Many of the world's most sophisticated IT environments rely on IBM's WebSphere MQ (WMQ) middleware to integrate business applications. Many best-of-breed focused IT shops also employ HP Operations Center for high level enterprise systems management.

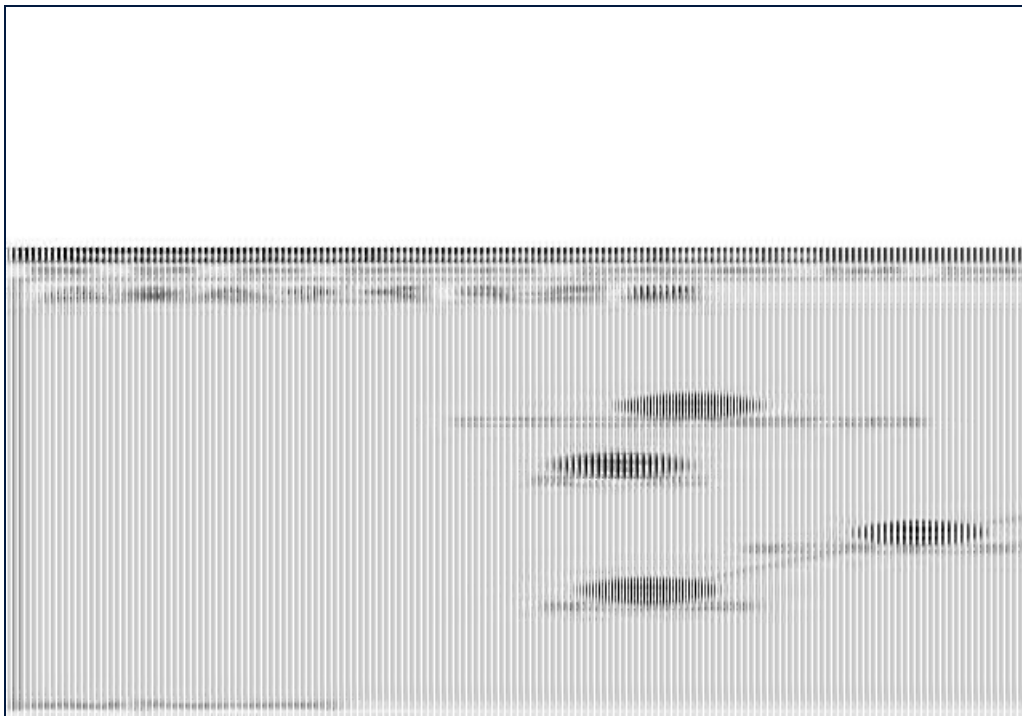
If your IT environment includes Operations Center and WMQ, you know that both are integral components of a highly effective yet complex IT infrastructure. Operations Center alone, however, does not give you visibility into or control over the business-critical WMQ environment.

**Expanded Services From Your Existing Management Operations**

AutoPilot/WMQ SPI enriches the potential of your HP Operations Center enterprise. Its tight, seamless integration with Operations Center allows you to continue to build on the investment you've already made in your infrastructure.

Nastel's AutoPilot/WMQ SPI saves you time and money. A production-proven out-of-the-box solution, it deploys quickly and easily into your Operations Center environment.

AutoPilot/WMQ SPI supports both the Operations Center and NNM consoles to help you ensure high availability and reliability for all of the integrated applications that drive your business



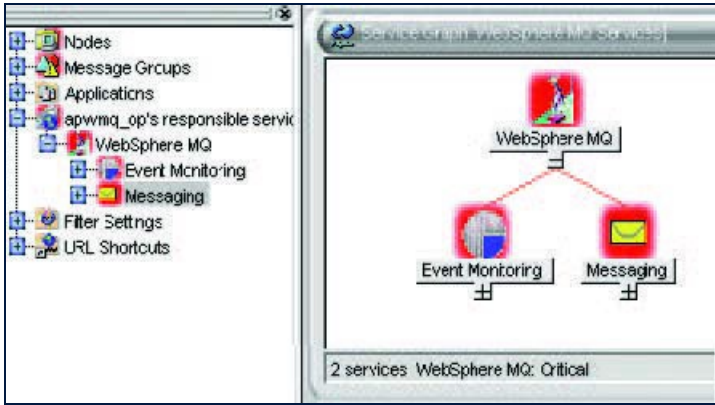
In today's highly competitive, fast-paced world, business happens in real-time. An interrupted transaction, slow system response, a stalled process, or anything that interferes with your business processes costs you revenue and customers.

Ensuring peak business process performance requires instant on-demand access to key operational performance metrics. You need consolidated high-level views of the overall health of all of your critical business processes.

**Platform Description:**

**Supported Platforms:**

- OS/390
- z/OS
- z/Linux
- AIX
- Linux
- OS/400
- Microsoft Windows
- HP/UX
- Open VMS Alpha
- AIX
- Solaris
- NSK
- and more



**Disclaimer:**

Information contained in this data sheet is up-to-date and correct as at the date of issue. All product, product specifications and data are subject to change without notice to improve reliability and function of our software. To the maximum extent permitted by law, Nastel Technologies, Inc. will not be responsible for damages of any nature resulting from the use or reliance upon the information contained in this data sheet. No express or implied warranties are given other than those implies mandatory by law.

P/N 010-0681-16-1